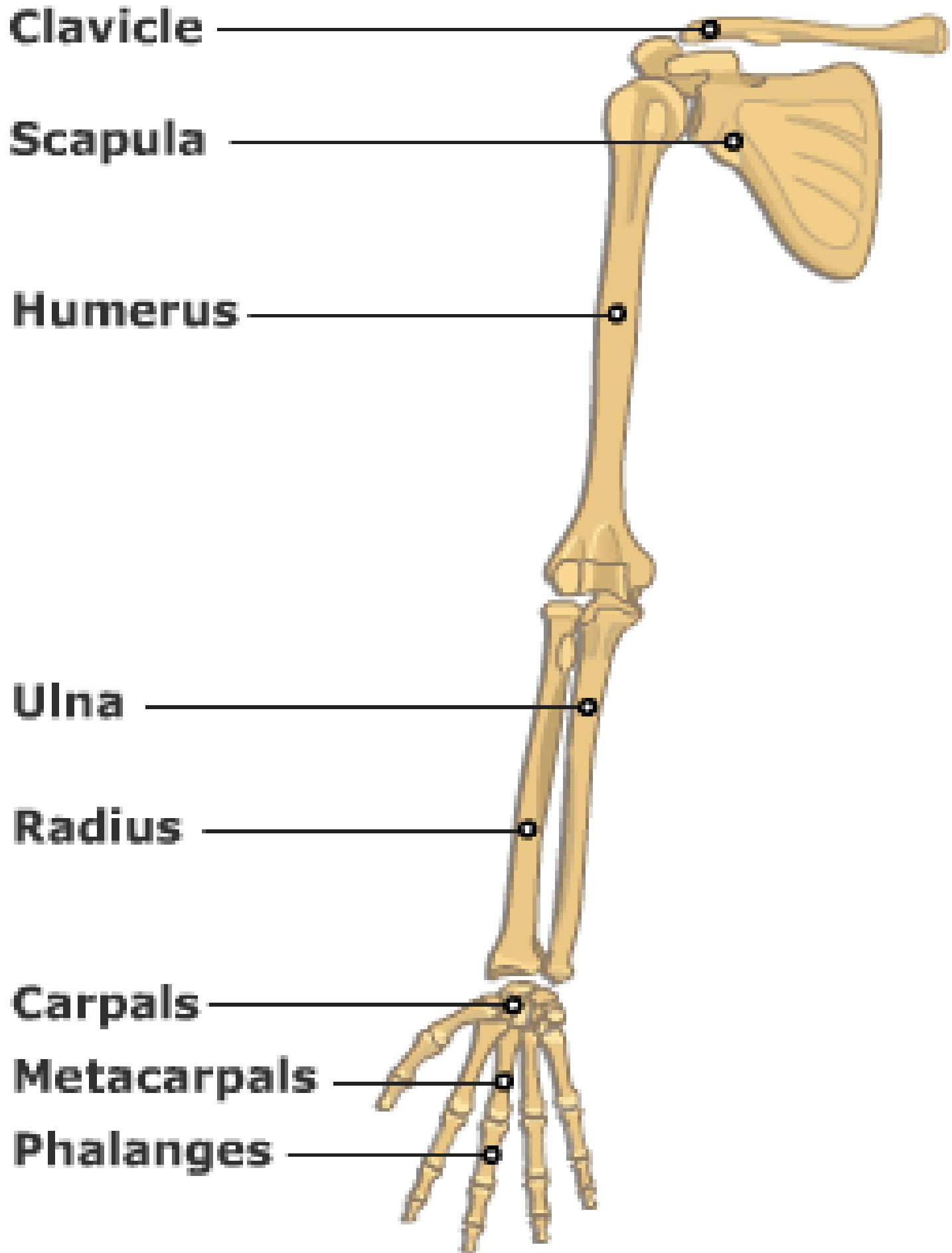
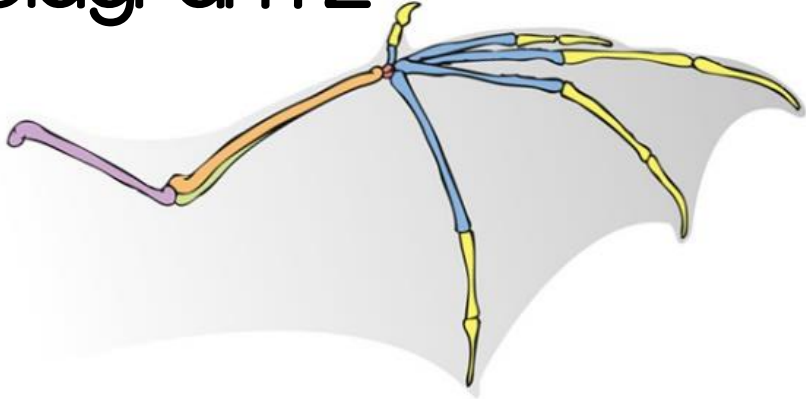


Part A: Diagram I

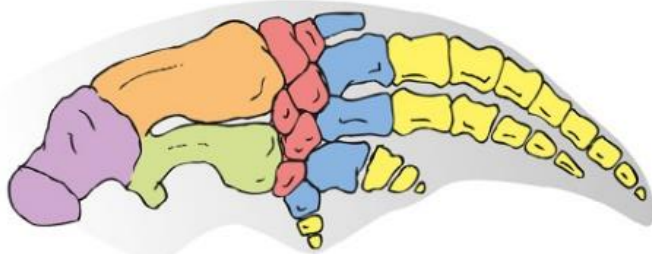


Part A: Diagram 2

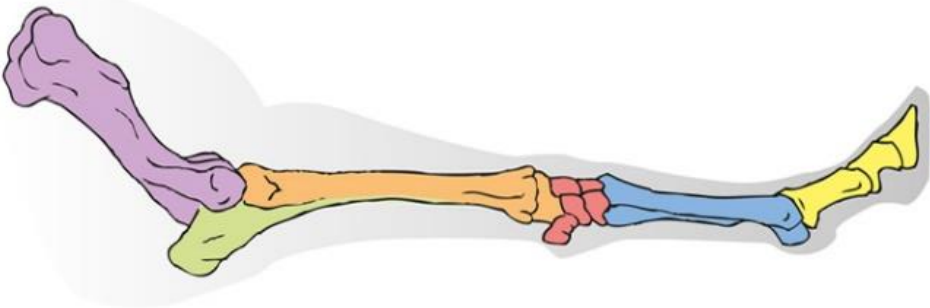
bat



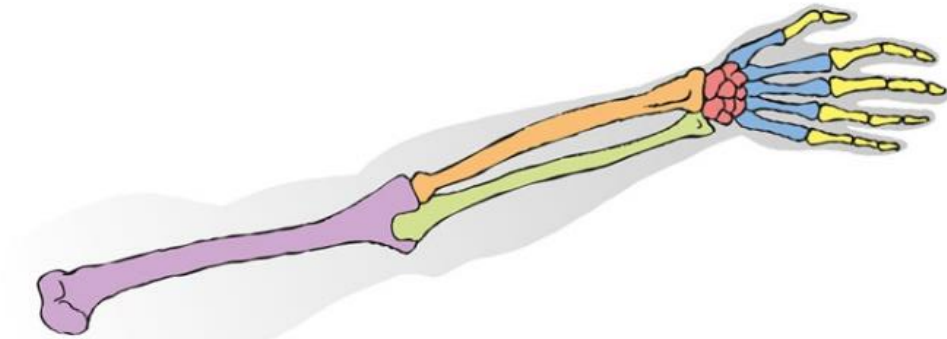
dolphin



horse



human



Part B: Diagram I

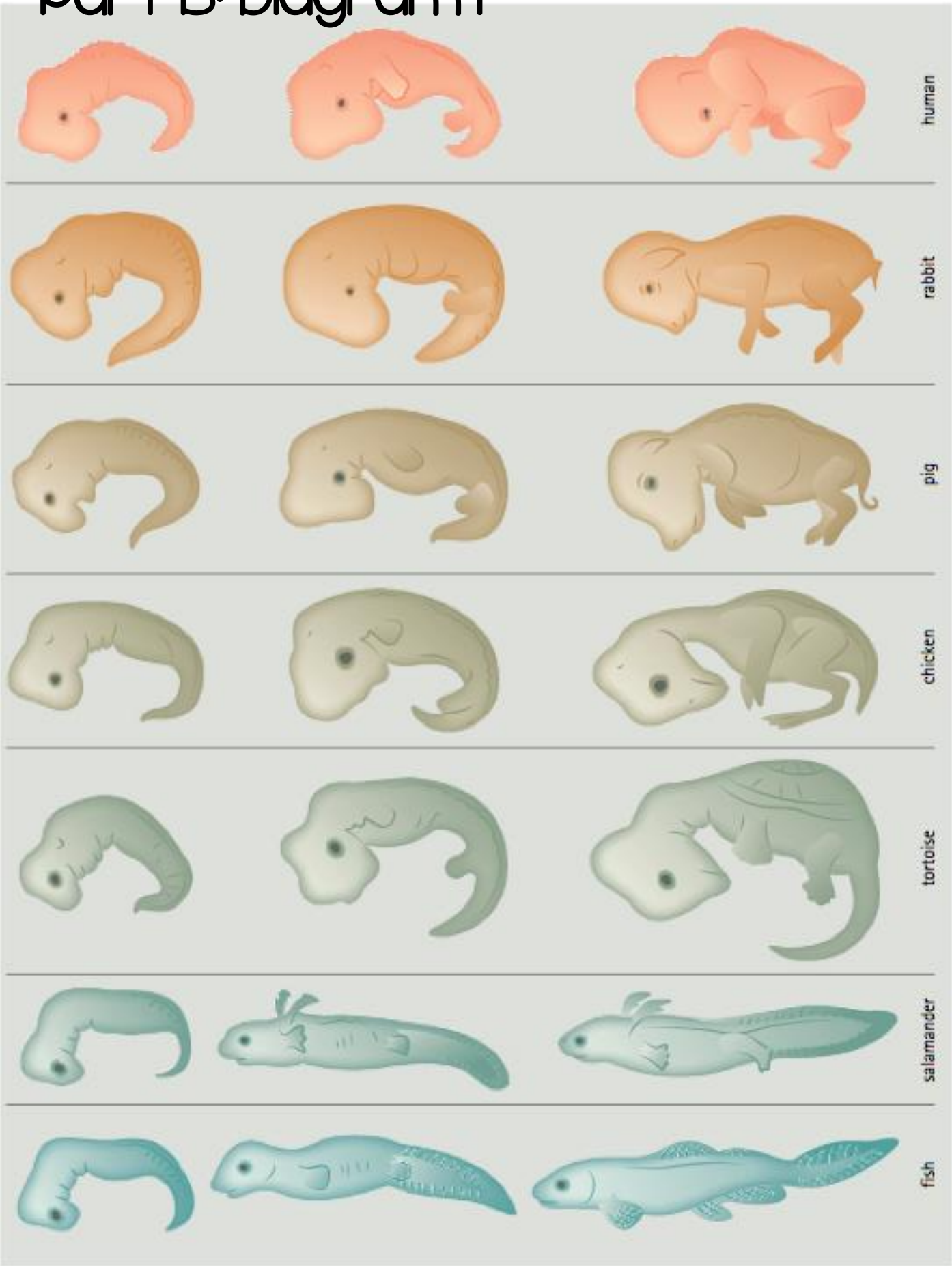
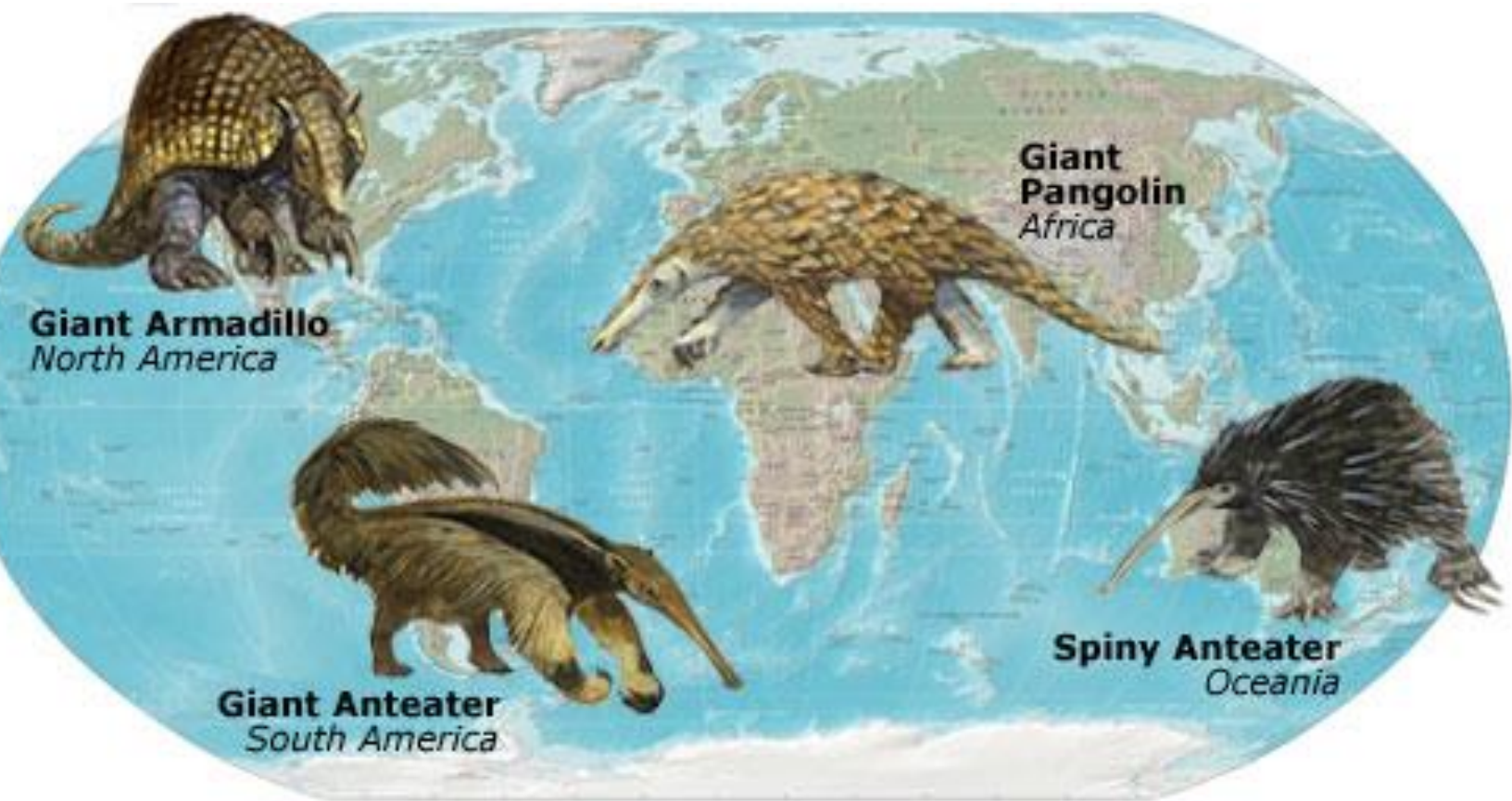
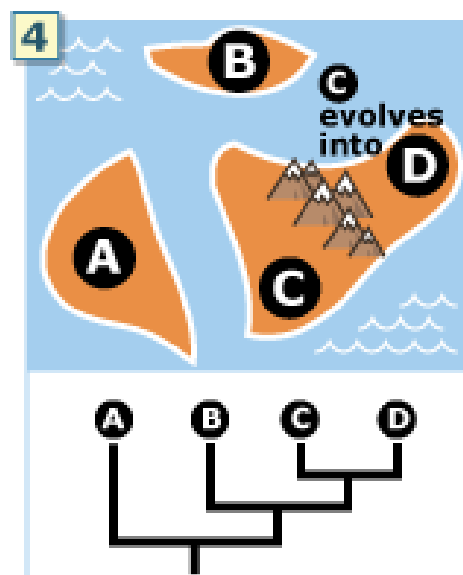
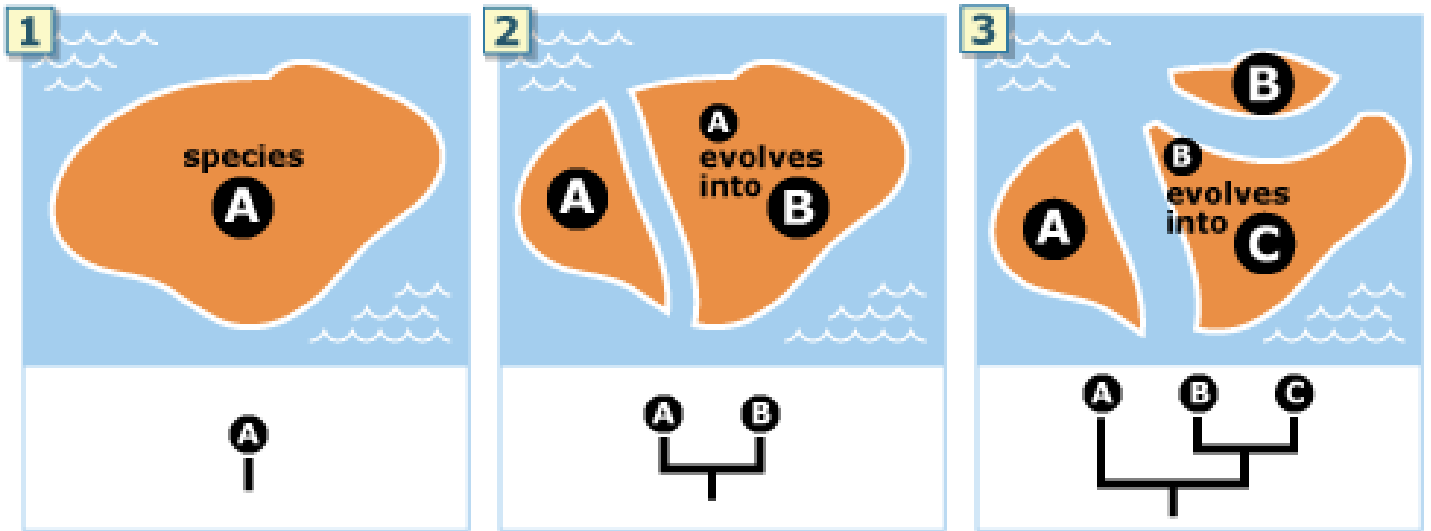


Figure 6.2.6 Stages in the embryonic development of vertebrates

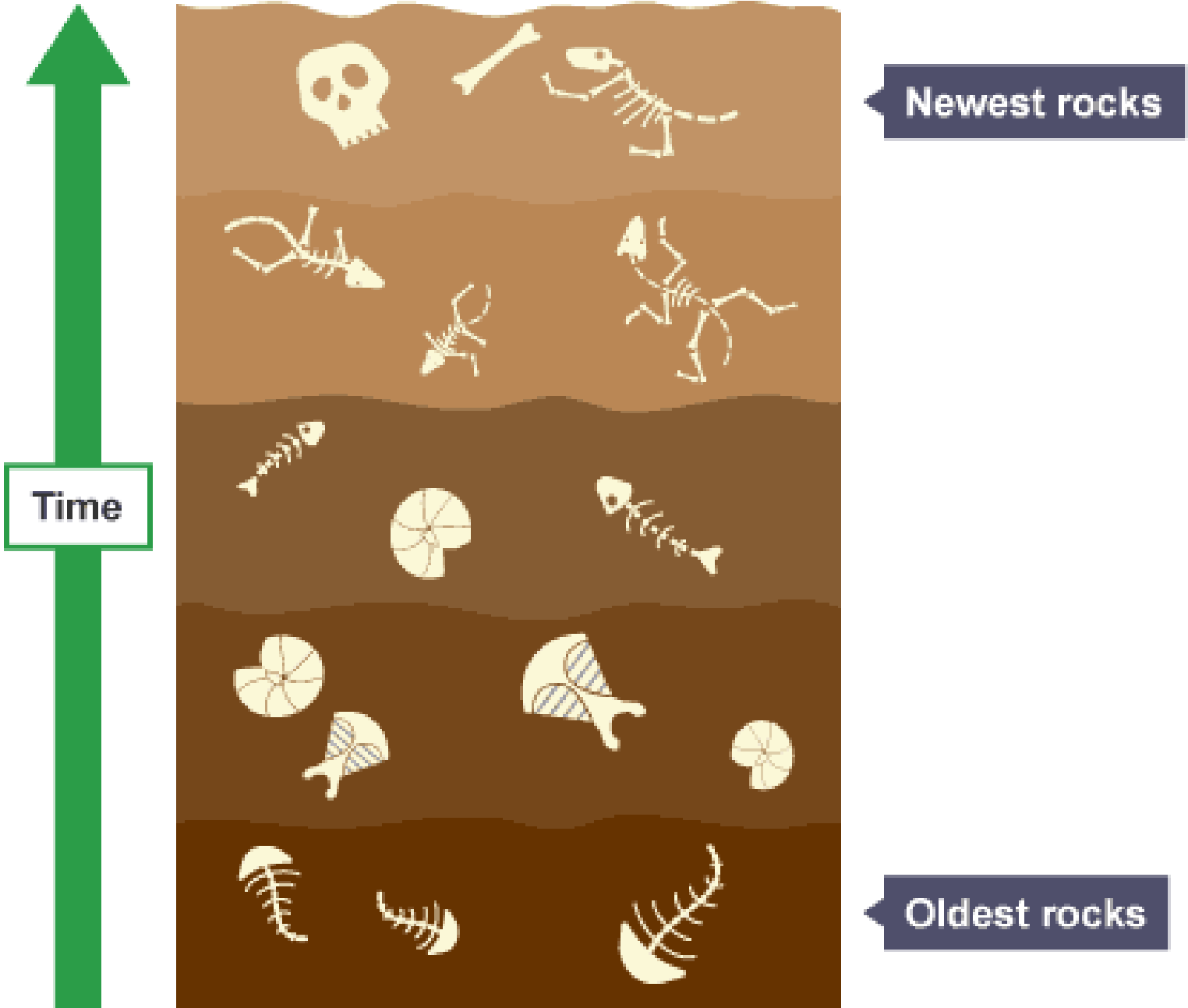
Part C: Diagram I



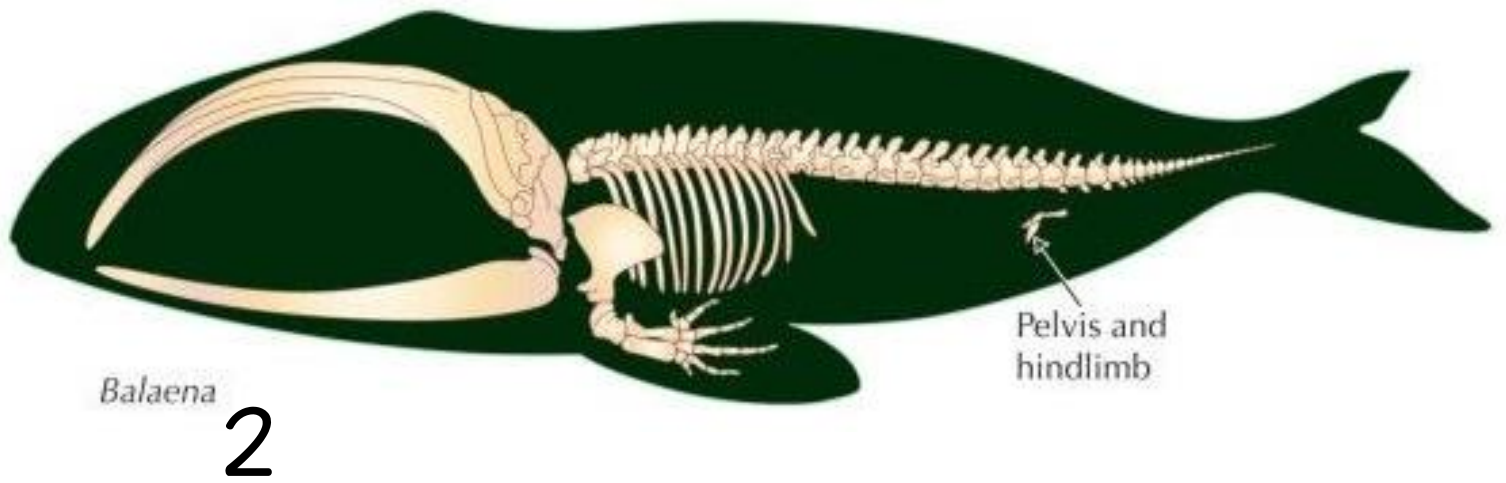
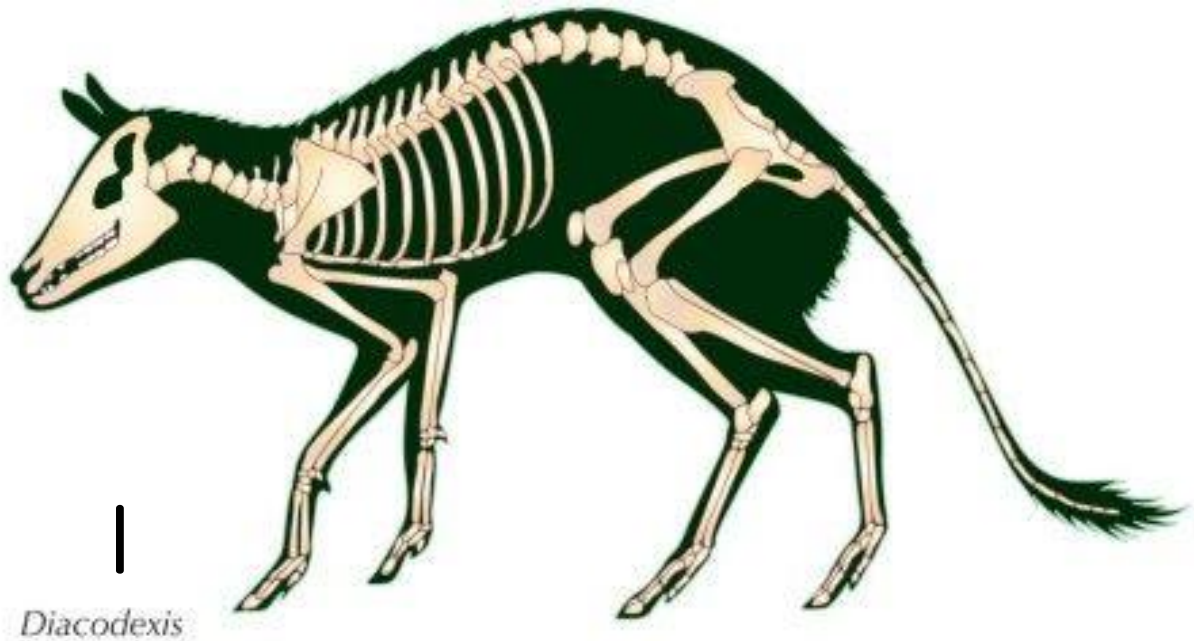
Part C: Diagram 2



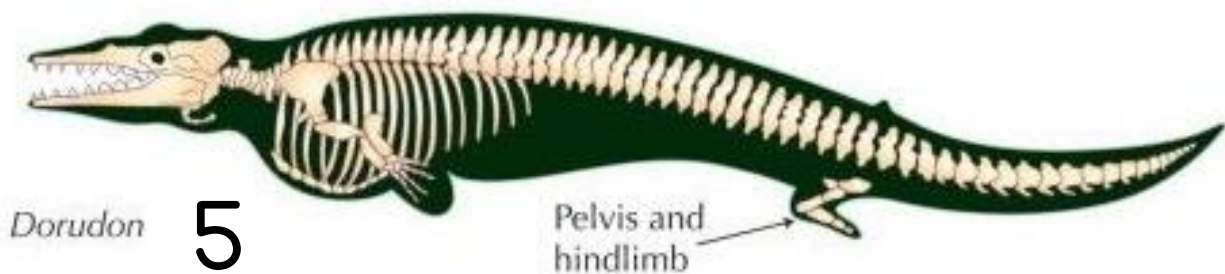
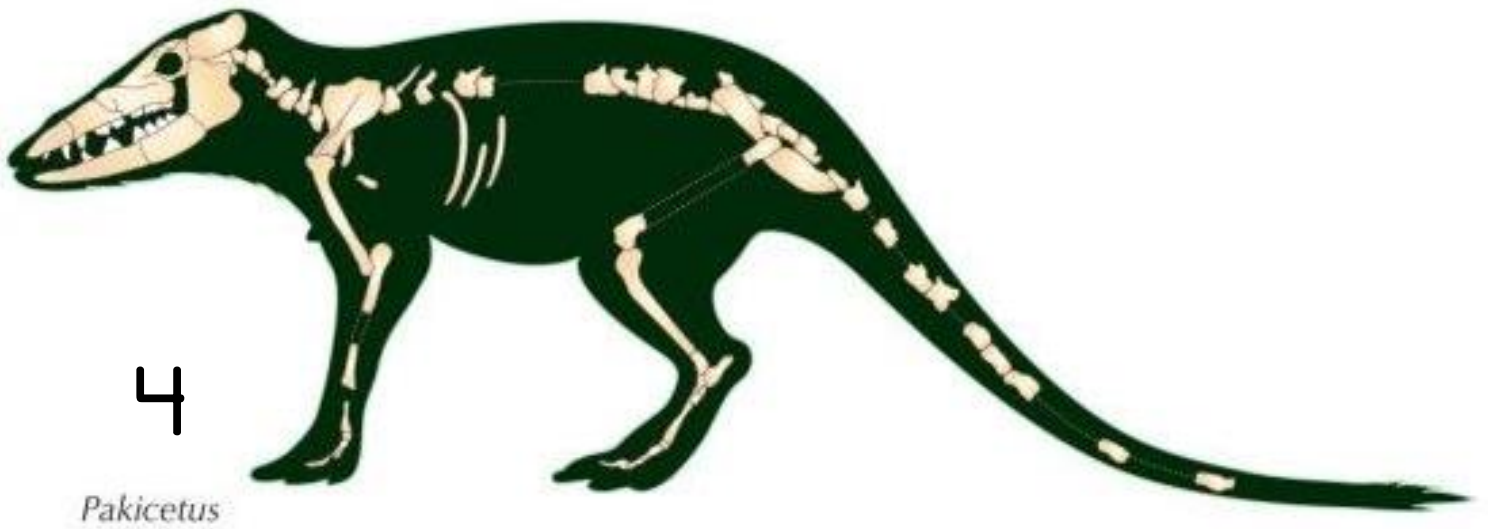
Part D: Diagram I



Part D: Diagrams



Part D: Diagrams Continued



Part E

Texas Salamander

Scientific Name:

Eurycea neotenes



Texas Blind Salamander

Scientific Name:

Eurycea rathbuni

