
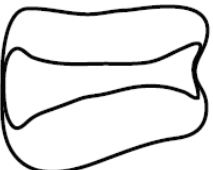

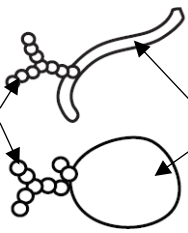
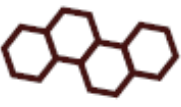

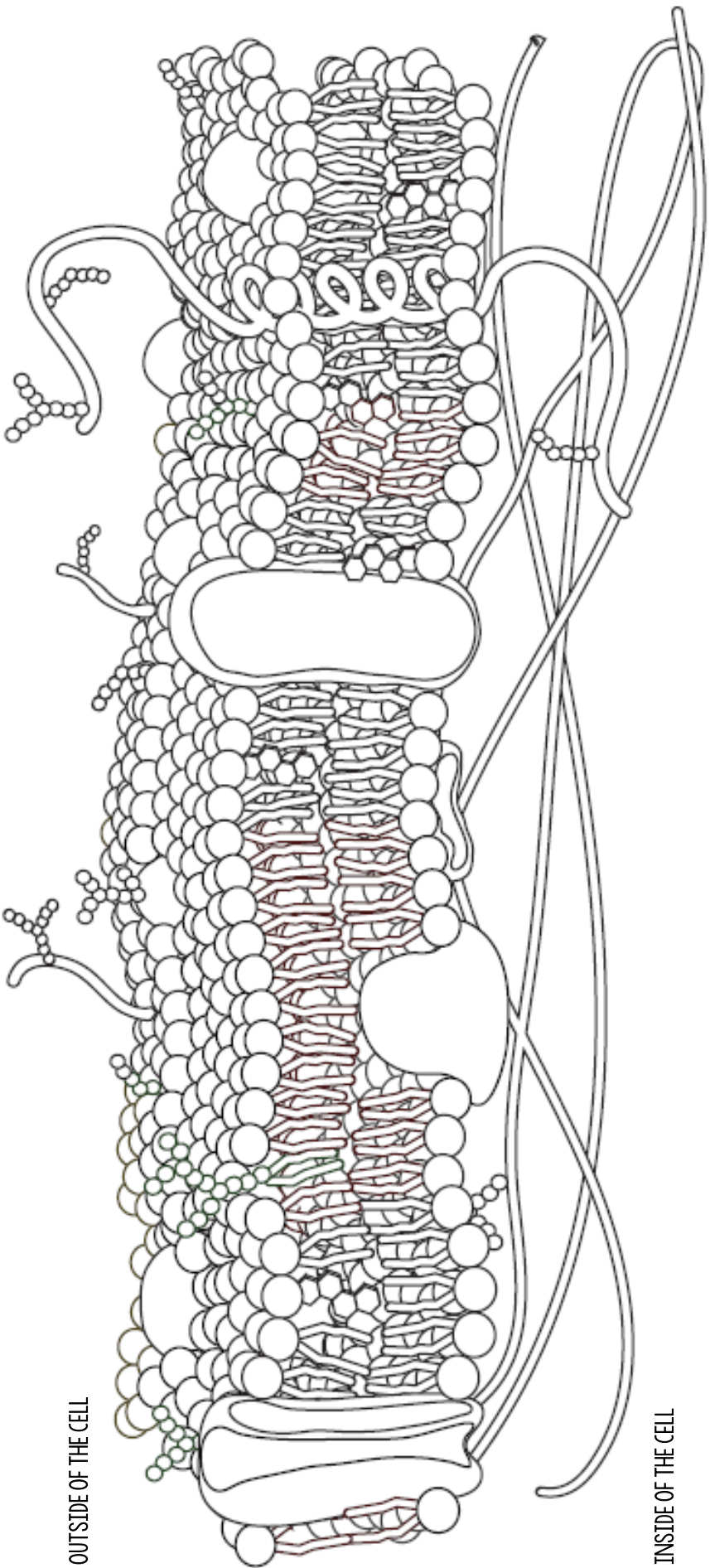


3.2 CELL MEMBRANE STRUCTURE & FUNCTION

<p>PHOSPHOLIPID COLOR HEAD RED COLOR TAILS YELLOW</p> 	<p>TRANSPORT CHANNEL PROTEIN COLOR DARK BLUE</p> 	<p>OTHER MEMBRANE PROTEINS COLOR LIGHT BLUE</p> 	<p>GLYCOPROTEINS COLOR CARBOHYDRATE GREEN COLOR PROTEIN LIGHT BLUE</p> 	<p>CHOLESTEROL COLOR ORANGE</p> 	<p>CYTOSKELETON COLOR PURPLE</p> 
--	---	--	---	--	--



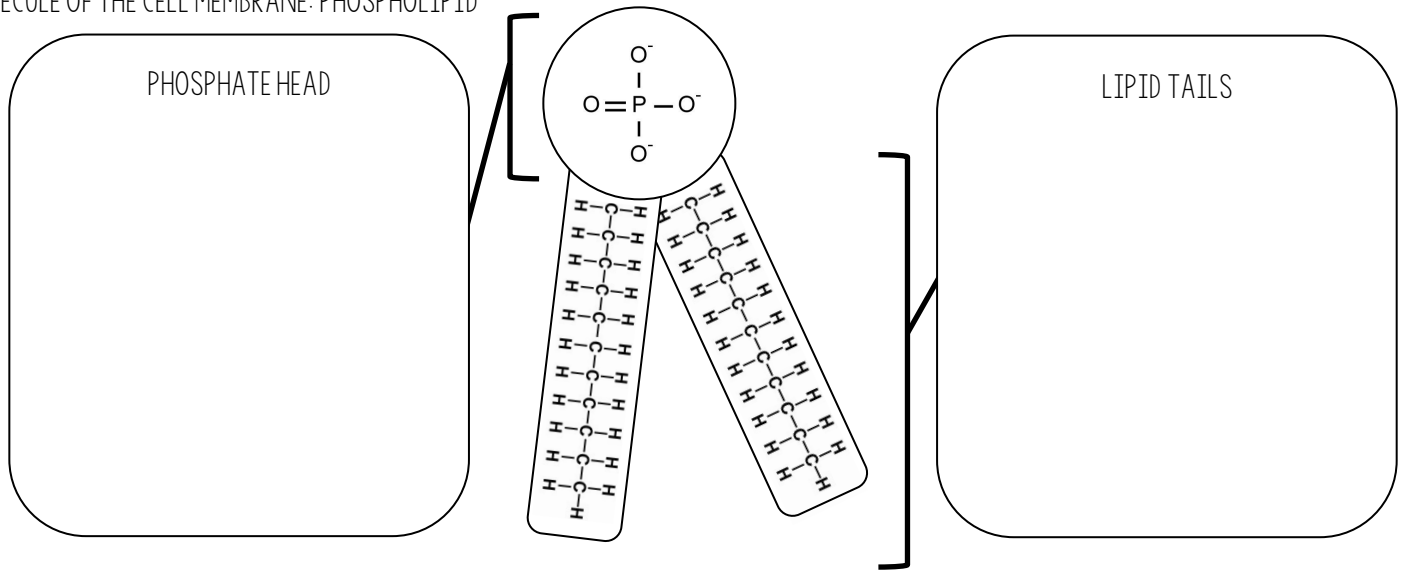
3.2 CELL MEMBRANE STRUCTURE & FUNCTION

FUNCTION OF CELL MEMBRANE:

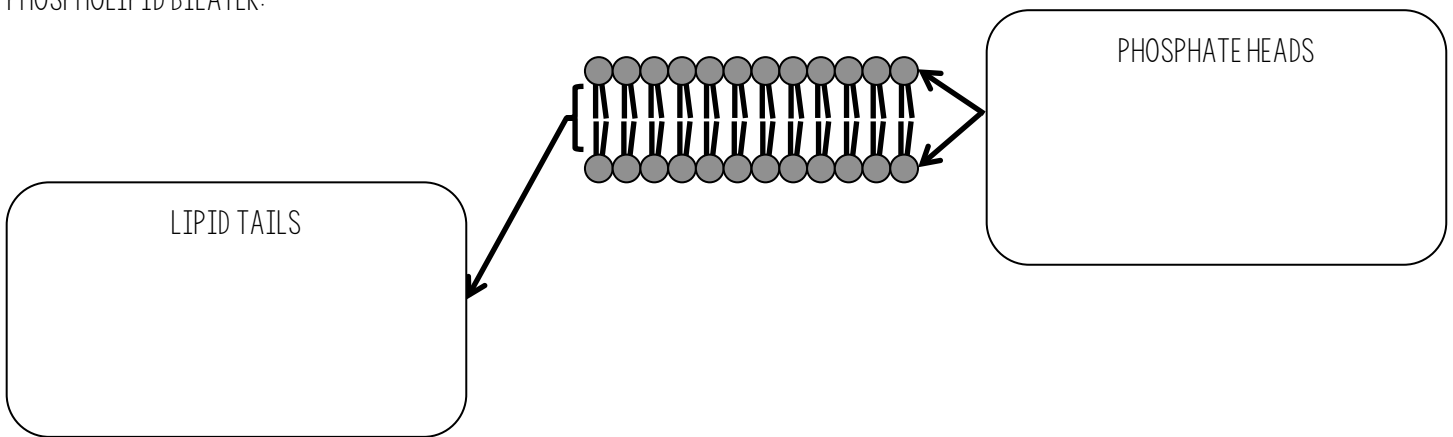
PROPERTIES OF THE CELL MEMBRANE:

1. THE MEMBRANE IS FLUID & FLEXIBLE
2. THE MEMBRANE CAN REPAIR ITSELF
3. ORGANELLES HAVE THEIR OWN MEMBRANES LIKE THE CELL MEMBRANE
4. MEMBRANE PROTEINS HAVE SPECIAL FUNCTIONS WITHIN THE MEMBRANE

MOLECULE OF THE CELL MEMBRANE: PHOSPHOLIPID



PHOSPHOLIPID BILAYER:



OTHER MOLECULES IN THE MEMBRANE:

TRANSPORT CHANNEL PROTEINS	OTHER MEMBRANE PROTEINS	GLYCOPROTEINS	CHOLESTEROL	CYTOSKELETON